

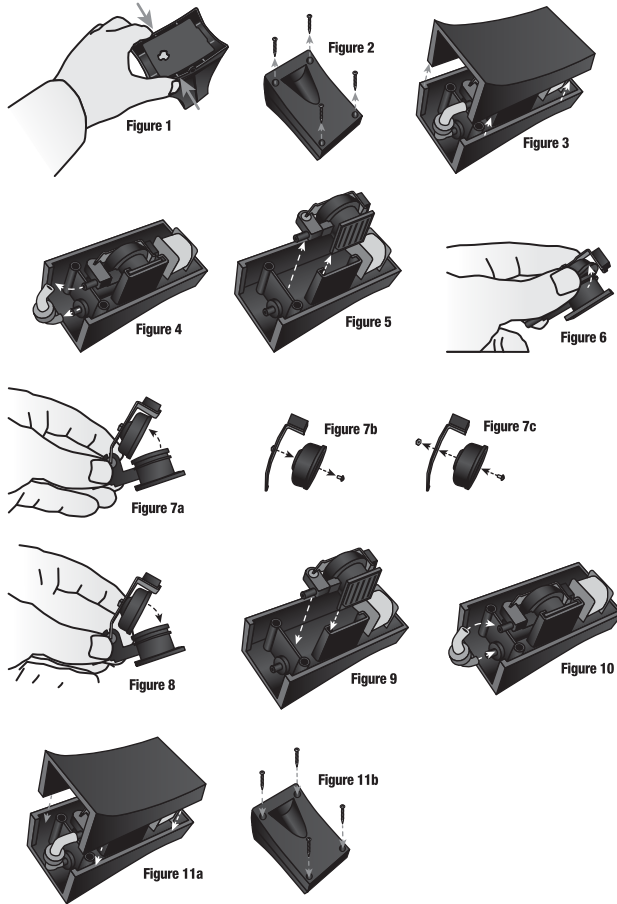
MAINTENANCE INSTRUCTIONS

Aqueon® QuietFlow® Air Pump, Models 10, 20 and 40

Tools needed: cross head screwdriver and needle nose pliers

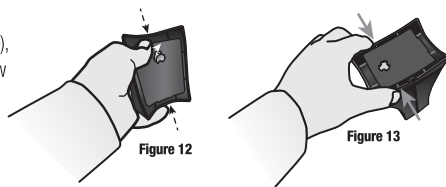
To replace diaphragm.

1. Unplug unit from wall
2. Remove rubber base, squeeze the edges and gently pull to separate. [Figure 1]
3. Remove 4 screws located on the back black housing. [Figure 2]
4. Gently pull apart front and back housing sections. [Figure 3]
5. Flip over to see check valve, gently remove check valve with a slight tug. [Figure 4]
6. Remove internal diaphragm/flapper housing by sliding it upward. [Figure 5]
7. Separate diaphragm from flapper housing. [Figure 6]
8. Flip diaphragm armature away from flapper housing. Using a cross head screwdriver remove diaphragm. Replace with new diaphragm, do not over tighten the retaining bolt. Over tightening can damage the new diaphragm. [Figure 7a, 7b and 7c]
9. Securely reattach diaphragm to flapper housing. [Figure 8]
10. Return internal flapper housing by sliding it back into place. [Figure 9]
11. To reconnect check valve, match "OUT" end of tubing with "OUT" connector on the base of the air pump. Match "IN" end of the tubing with the "IN" connector on the base of the air pump. [Figure 10]
12. Realign air pump housing section and secure with 4 screws. [Figure 11a and 11b]



To replace filter.

1. To replace the filter (located in the rubber base), push pad from the opposite side. This will allow for the pad to be removed with finger tips or tweezers. [Figure 12]
2. Return rubber base to unit. [Figure 13]



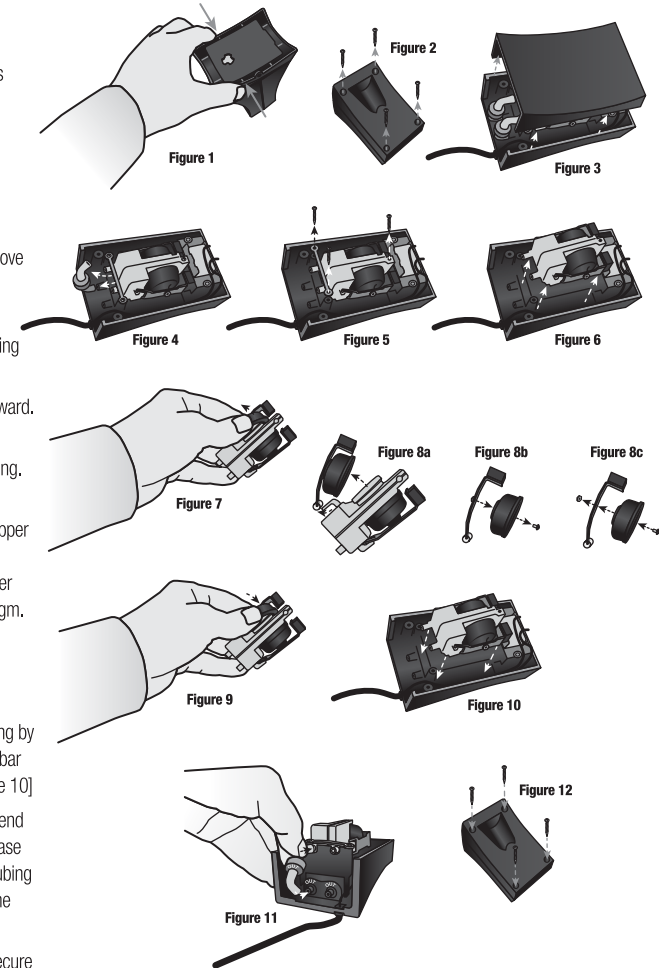
MAINTENANCE INSTRUCTIONS

Aqueon® QuietFlow® Air Pump, Models 60 and 100

Tools needed: cross head screwdriver and needle nose pliers

To replace diaphragm.

1. Unplug unit from wall.
2. Remove rubber base, squeeze the edges and gently pull to separate. [Figure 1]
3. Remove 4 screws located on the back black housing. [Figure 2]
4. Gently pull apart front and back housing sections. [Figure 3]
5. Flip over to see check valves, gently remove check valves with a slight tug. [Figure 4]
6. Unscrew cross bar and other screws holding internal diaphragm/flapper housing in place by sliding it upward. [Figure 5]
7. Remove internal housing by sliding it upward. [Figure 6]
8. Separate diaphragms from flapper housing. [Figure 7]
9. Flip diaphragm armatures away from flapper housing. Replace with new diaphragm, do not over tighten the retaining bolt. Over tightening can damage the new diaphragm. [Figure 8a, 8b and 8c]
10. Securely reattach diaphragms to flapper housing. [Figure 9]
11. Return internal diaphragm/flapper housing by sliding it back into place. Reattach crossbar and internal housing with screws. [Figure 10]
12. To reconnect check valve, match "OUT" end of tubing with "OUT" connector on the base of the air pump. Match "IN" end of the tubing with the "IN" connector on the base of the air pump. [Figure 11]
13. Realign air pump housing section and secure with 4 screws. [Figure 12]



To replace filter.

1. To replace the filter (located in the rubber base), push pad from the opposite side. This will allow for the pad to be removed with finger tips or tweezers. [Figure 13]
2. Return rubber base to unit. [Figure 14]

