



Circulation Pumps

Instructions



Please read these instructions in their entirety before attempting to use this product.



The Aqueon® ACP500, ACP700, ACP950, ACP1250 and ACP1650 Circulation Pumps are listed by Underwriters Laboratories to ensure that they meet the stringent U.S. and Canadian safety requirements.

IMPORTANT SAFETY INSTRUCTIONS

WARNING – To guard against injury, basic safety precautions should be observed including the following:

1. **READ AND FOLLOW ALL SAFETY INSTRUCTIONS**

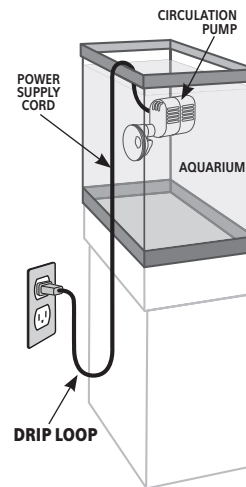
2. **DANGER** – To avoid possible electric shock, special care should be taken since water is employed in the use of aquarium equipment. For each of the following situations, do not attempt to repair yourself; return the appliance to an authorized service facility for service or discard the appliance:

A. If the appliance shows any sign of abnormal water leakage, immediately unplug it from power.

B. Carefully examine the appliance after installation. It should not be plugged in if there is water on the parts not intended to be wet.

C. Do not operate any appliance if it has a damaged cord or plug, or if it is malfunctioning or if it is dropped or damaged in any manner.

D. To avoid the possibility of the appliance plug or receptacle getting wet, position aquarium stand and tank to one side of the wall-mounted receptacle to prevent water from dripping onto the receptacle or plug. As shown in the figure, a "drip loop" should be arranged by the user for each cord connecting an aquarium appliance to the receptacle. The "drip loop" is the part of the cord below the level of the receptacle, or the connector if an extension cord is used, to prevent water travel along the cord and coming in contact with the receptacle. If the plug or the receptacle does get wet, DON'T unplug the cord. Disconnect the fuse to the circuit breaker that supplies power to the appliance. Then unplug and examine for the presence of water in the receptacle.



3. Close supervision is necessary when any appliance is used by or near children.
4. To avoid injury, do not contact moving parts or hot parts such as heaters, reflectors, lamp bulbs, etc.
5. Always unplug an appliance from the outlet when not in use, before putting on or taking off parts, and before cleaning. Never yank the cord to pull plug from the outlet. Grasp the plug and pull to disconnect.
6. Do not use an appliance for other than intended use. The use of attachments not recommended or sold by the appliance manufacturer may cause an unsafe condition.
7. Do not install or store the appliance where it will be exposed to the weather or to temperatures below freezing.
8. Make sure an appliance mounted on a tank is securely installed before operating it.
9. Read and observe all the important notices on the appliance.
10. If an extension cord is necessary, a cord with a proper rating should be used. A cord rated for less amperes or watts than the appliance rating may overheat. Care should be taken to arrange the cord so that it will not be tripped over or pulled.

ONLY FOR POLARIZED ATTACHMENT PLUG APPLIANCES

11. This appliance has a polarized plug (one blade is wider than the other) as a safety feature, this plug will fit in a polarized outlet only one way. If the plug does not fit fully in the outlet, reverse the plug. If it still does not fit, contact a qualified electrician. Never use with an extension cord unless plug can be fully inserted. Do not attempt to defeat this safety feature.
12. **CAUTION: DO NOT RUN DRY, FOR INDOOR AND HOUSEHOLD USE ONLY, IMPEDENCE PROTECTED (I.P.),** Maximum submersible depth for pump is 1.2m.

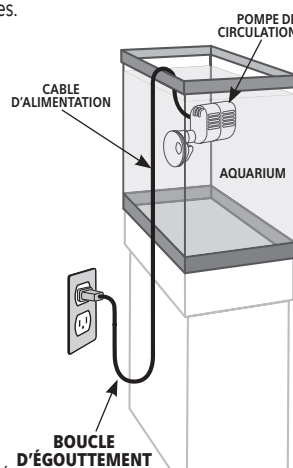
13. **SAVE THESE INSTRUCTIONS**

CONSIGNES DE SÉCURITÉ IMPORTANTES

AVERTISSEMENT – Pour protéger contre les blessures, respecter les consignes de sécurité de base, notamment ce qui suit :

1. LIRE ET RESPECTER TOUTES LES INSTRUCTIONS DE SÉCURITÉ.

2. **DANGER** – Pour écarter les risques de décharge électrique, faire preuve de précautions particulières en raison de la présence d'eau dans l'aquarium. Dans chacune des situations ci-dessous, ne pas tenter de réparer soi-même ; renvoyer l'appareil à un centre de réparation agréé ou le mettre au rebut.
 - A. Si l'appareil montre des signes de fuite d'eau anormale, le débrancher immédiatement.
 - B. Examiner l'appareil avec soin après son installation. Ne pas le brancher s'il y a de l'eau sur des pièces non destinées à être mouillées.
 - C. Ne pas utiliser un appareil s'il a un cordon ou une fiche endommagés, s'il fonctionne mal, s'il est tombé ou s'il a été endommagé d'une quelconque façon.
 - D. Pour écarter le risque de mouiller la fiche de l'appareil ou la prise de courant, placer le socle et la cuve de l'aquarium sur le côté par rapport à la prise murale, afin d'éviter que l'eau ne goutte sur la prise ou la fiche. Prévoir une « boucle d'égouttement », illustrée ci-dessous, sur chaque cordon qui raccorde un appareil de l'aquarium à la prise de courant. La « boucle d'égouttement » est la portion de cordon en dessous du niveau de la prise, ou du connecteur si un cordon de rallonge est utilisé, pour empêcher l'eau de s'écouler le long du cordon et de venir au contact de la prise. Si la fiche ou la prise sont mouillées, NE PAS débrancher le cordon. Couper l'électricité au niveau du disjoncteur qui alimente l'appareil. Débrancher ensuite le cordon et voir s'il y a de l'eau dans la prise de courant.
3. Une supervision étroite est nécessaire lors de l'utilisation de tout appareil électrique par des enfants ou à leur proximité.
4. Pour éviter les blessures, ne pas toucher de pièces en mouvement ni de pièces chaudes telles que radiateurs, réflecteurs, ampoules, etc.
5. Toujours débrancher un appareil de la prise de courant lorsqu'il n'est pas utilisé, avant de poser ou d'enlever des pièces et avant de le nettoyer. Ne jamais tirer sur le cordon pour sortir la fiche de la prise. Saisir la fiche et tirer pour débrancher.
6. Ne pas utiliser un appareil à d'autres fins que celles prévues. L'emploi d'accessoires non recommandés ni vendus par le fabricant de l'appareil peut produire une situation dangereuse.
7. Ne pas installer ni entreposer l'appareil dans un endroit exposé aux intempéries ou à des températures inférieures au gel.
8. S'assurer qu'un appareil monté sur un aquarium est solidement installé avant de le mettre en marche.
9. Lire et respecter toutes les consignes importantes figurant sur l'appareil.
10. Si un cordon de rallonge est nécessaire, utiliser un cordon de capacité suffisante. Un cordon prévu pour des intensités (A) ou des puissances (W) inférieures à celles de l'appareil peut surchauffer. Veiller à disposer le cordon de manière à éviter tout risque de trébuchement ou d'arrachement.



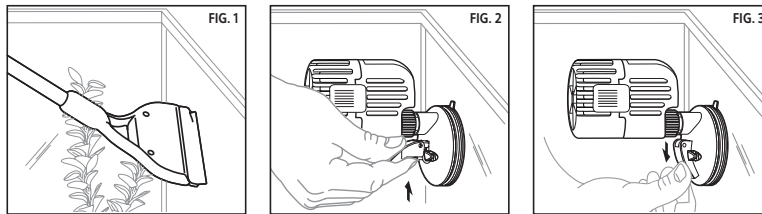
APPAREILS À FICHE POLARISÉE SEULEMENT

11. Cet appareil est muni d'une fiche polarisée (une lame est plus large que l'autre) comme mesure de sécurité; cette fiche ne peut être branchée dans une prise polarisée que dans un sens. Si la fiche ne rentre pas complètement dans la prise, retourner la fiche. Si elle ne rentre toujours pas, contacter un électricien qualifié. Ne jamais utiliser avec un cordon de rallonge si la fiche ne s'enfonce pas complètement. Ne pas tenter de contourner ce dispositif de sécurité.
12. **ATTENTION** : NE PAS FAIRE FONCTIONNER À SEC, POUR USAGE DOMESTIQUE ET À L'INTÉRIEUR SEULEMENT, PROTECTION CONTRE L'IMPÉDANCE (Z.P.), la profondeur maximale de submersion de la pompe est de 1,2 m.

13. CONSERVER CES INSTRUCTIONS

Installation Instructions

1. Check pump for any signs of shipping damage. If damaged, do not operate and return to place of purchase.
2. Clean glass in desired pump mounting location within aquarium. (Fig. 1)
3. Press suction cup attachment with pump attached firmly against glass. (Fig. 2)
4. Fold suction assist lever arm down to lock pump securely in place. (Fig. 3)
5. Pump can be moved into desired flow direction.
6. Plug pump into receptacle. Always be sure that pump is completely submerged before operating. Do not run pump dry. Be sure that the cord makes a "drip loop" to prevent water from running down and into the receptacle.
7. Tighten universal joint lock to secure pump in place. (for Models ACP 700-1650)

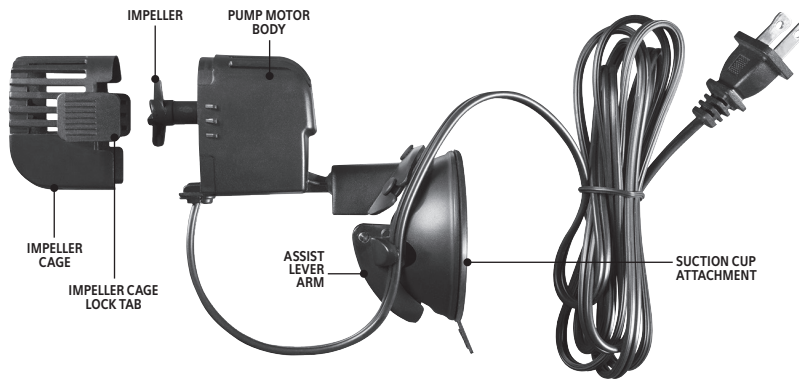


Maintenance

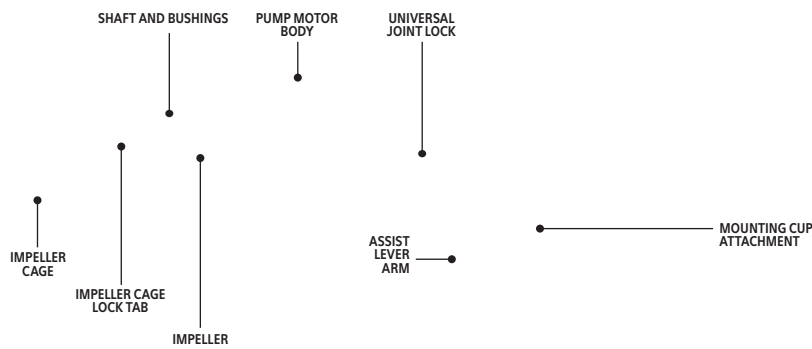
To maintain efficient performance of the pump, periodic cleaning is required.

1. Unplug pump and remove from aquarium.
2. Clean outside of pump motor body and impeller cage with a brush or scouring pad to remove accumulated algae and debris.
3. Remove impeller cage by squeezing tabs on pump motor body simultaneously. Pull cage forward to release.
4. Clean impeller by wiping with a soft cloth. Rinse the pump motor body under fresh water.
5. Reinsert impeller back into impeller well and reattach cage.
6. Install pump back into aquarium.

Parts Diagram ACP500



Parts Diagram ACP700, ACP950, ACP1250, ACP1650



Product Specifications

Aqueon® Circulation Pump	Flow Rate	Recommended Aquarium Size	Wattage	Voltage/ Frequency	Milliampere
Model ACP500	500 gph (1892 lph)	20-40 gallon	3.3W	120V/60Hz	35
Model ACP700	700 gph (2650 lph)	30-55 gallon	3.5W	120V/60Hz	40
Model ACP950	950 gph (3596 lph)	55-90 gallon	6.8W	120V/60Hz	90
Model ACP1250	1250 gph (4732 lph)	75-125 gallon	7.0W	120V/60Hz	90
Model ACP1650	1650 gph (6246 lph)	125-180 gallon	8.8W	120V/60Hz	125

Limited Lifetime Warranty

WHAT THE WARRANTY COVERS:

Central Aquatics (Company) warrants this product (see Exclusions below) to the original purchaser against defective material and workmanship that occurs during normal in-home use for the life of the product. Company will, at Company's option, either repair or replace same without charge (but no cash refunds will be made).

EXCLUSIONS:

1. Damage resulting from accident, misuse, abuse, lack of reasonable care, subjecting the product to any but the specified electrical service, other than normal and ordinary use of the product, subjecting the product to abnormal working conditions or any other failure not resulting from defects in materials or workmanship.
2. Damage resulting from modification, tampering with or attempted repair by anyone other than the Company.
3. Transfer of product to someone other than the original consumer purchaser.
4. The warranty is not valid for components subject to wear.

FOR WARRANTY OR TECHNICAL SERVICE:

1. Contact the Company by mail or telephone:
Central Aquatics
5401 West Oakwood Park Drive, Franklin, WI 53132
Telephone: (888) 255-4527
to obtain a return authorization number.

NOTE: Be sure to provide contact information when requesting return authorization number.

2. Deliver, mail or ship the product, together with a copy of the original bill of sale, to:
Central Aquatics, 5401 West Oakwood Park Drive, Franklin, WI 53132

You must pay any postage, shipping charges, insurance costs and other expenses to return the product to Central Aquatics, Franklin, WI 53132. However, if the necessary repairs are covered by the warranty, Company will pay the return shipping charges to any destination within the United States or Canada.

LIMITATION OF IMPLIED WARRANTIES AND EXCLUSION OF CERTAIN DAMAGES: THE COMPANY DISCLAIMS LIABILITY FOR INCIDENTAL AND CONSEQUENTIAL DAMAGES FOR BREACH OF ANY EXPRESS OR IMPLIED WARRANTY, INCLUDING ANY IMPLIED WARRANTY OF MERCHANTABILITY, WITH RESPECT TO THIS PRODUCT. THIS WRITING CONSTITUTES THE ENTIRE AGREEMENT OF THE PARTIES WITH RESPECT TO THE SUBJECT MATTER HEREOF; NO WAIVER OR AMENDMENT SHALL BE VALID UNLESS IN WRITING SIGNED BY THE COMPANY.

Some states do not allow the exclusion or limitation of consequential damages, so the above limitation or exclusion may not apply to you.

A product of Central Aquatics
(Division of Central Garden & Pet Company)
Franklin, WI 53132 888.255.4527
Aqueon and It's all about the fish are registered
trademarks of Central Garden & Pet Company
© 2017 Central Garden & Pet Company
Made in China

This device complies with Part 15 of the FCC Rules. Operation is subject to the following two conditions: (1) this device may not cause harmful interference, and (2) this device must accept any interference received, including interference that may cause undesired operation.