



It's all about the fish.®

Aquarium Reflectors

For use on:

Deluxe Full Hoods

Installation Instruction Manual



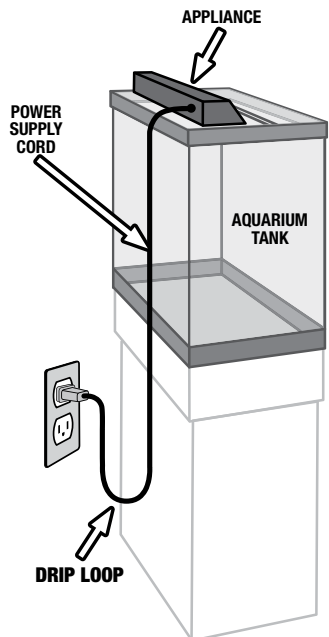
Central Aquatics
5401 West Oakwood Park Drive
Franklin, WI 53132

IMPORTANT SAFETY INSTRUCTIONS

WARNING - To guard against injury, basic safety precautions should be observed including the following:

1. READ AND FOLLOW ALL SAFETY INSTRUCTIONS.

2. **DANGER** - To avoid possible electric shock, special care should be taken since water is employed in the use of aquarium equipment. For each of the following situations, do not attempt to repair yourself; return the appliance to an authorized service facility for service or discard the appliance.
 - A. If the appliance falls into the water, DO NOT reach for it! First unplug it and then retrieve it. If electrical components of the appliance get wet, unplug the appliance immediately.
 - B. Carefully examine the appliance after installation. It should not be plugged in if there is water on the parts not intended to be wet.
 - C. Do not operate any appliance if it has a damaged cord or plug, if it is malfunctioning or if it is dropped or damaged in any manner.
 - D. To avoid the possibility of the appliance plug getting wet, position aquarium stand and tank to one side of a wall mounted receptacle to prevent water from dripping onto the receptacle or plug. A "drip loop", shown in the figure below, should be arranged by the user for each cord connecting an aquarium appliance to the receptacle. The "drip loop" is the part of the cord below the level of the receptacle, or the connector if an extension cord is used, to prevent water traveling along the cord and coming in contact with the receptacle. If the plug or receptacle does get wet, DO NOT unplug the cord. Disconnect the fuse to the circuit breaker that supplies power to the appliance. Then unplug and examine for the presence of water in the receptacle.
3. Close supervision is necessary when any appliance is used by or near children.
4. To avoid injury, do not contact moving parts or hot parts such as heaters, reflectors, lamp bulbs, and the like.
5. Always unplug the appliance from the outlet when not in use, before putting on or taking off parts, and before cleaning. Never yank the cord to pull plug from outlet. Grasp the plug and pull to disconnect.
6. Do not use an appliance for other than intended use. The use of attachments not recommended or sold by the appliance manufacturer may cause an unsafe condition.
7. Do not install or store the appliance where it will be exposed to the weather or to temperatures below freezing.
8. Make sure an appliance mounted on a tank is securely installed before operating it.
9. Read and observe all the important notices on the appliance.



10. If an extension cord is necessary, a cord with a proper rating should be used. A cord rated for less amperes or watts than the appliance rating may overheat. Care should be taken to arrange the cord so that it will not be tripped over or pulled.
11. Determine which power cord your aquarium reflector has: (A) a 2 conductor (2-prong plug) or (B) a 3 conductor (3-prong plug).
 - A. The 2 conductor model has a polarized plug (one blade is wider than the other). As a safety feature, this plug will fit in a polarized outlet only one way. If the plug does not fit fully in the outlet, reverse the plug. If it still does not fit, contact a qualified electrician. Never use with an extension cord unless plug can be fully inserted. Do not attempt to defeat this safety feature.
 - B. For conductor models, see “GROUNDING INSTRUCTIONS” below.
12. This appliance was designed for use over a glass aquarium cover or panel. **DO NOT USE OVER “OPEN” WATER.** Moisture from the aquarium will collect on exposed light parts and may cause a shock hazard and/or damage the light.
This appliance is intended **FOR HOUSEHOLD USE ONLY.**
13. Do not use or mount this appliance in such a way that the top vents are restricted or blocked. These vents are necessary to avoid ballast over heating and ensure safe operating temperatures.

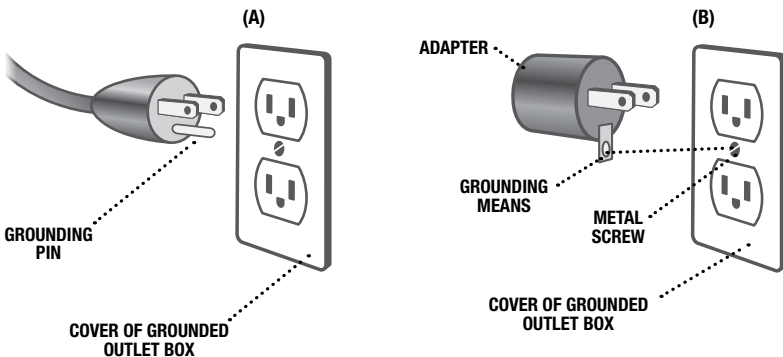
14. SAVE THESE INSTRUCTIONS.

GROUNDING INSTRUCTIONS

This appliance should be grounded to minimize the possibility of electric shock. This appliance is equipped with an electric cord having an equipment grounding conductor and a grounding type plug. The plug must be plugged into an outlet that is installed and grounded in accordance with all codes and ordinances.

The 3 conductor (3-prong plug) model is for use on a nominal 120 volt circuit, and has a grounding plug that looks like the plug illustrated in (A) below. A temporary adapter which looks like the adapter illustrated in (B) below may be used to connect this plug to a two-pole receptacle as shown in (B) if a grounded outlet is not available. The temporary adapter should be used only until a grounded outlet can be installed by a qualified electrician. The green-colored rigid ear (lug, and the like) extending from the adapter must be fastened to a permanent ground such as a grounded outlet box.

Note: Grounding adapters are not acceptable in Canada.



IMPORTANT CLEANING & SERVICING PRECAUTIONS

CLEANING: It is important to keep this appliance clean. **Unplug** and remove the unit from the aquarium. Wipe exposed surfaces carefully with a damp cloth to remove any dust or mineral deposits which may collect over time. Make sure all surfaces are dry before reinstalling.

SERVICING: In order to assure proper electrical connections and polarity, replacement parts and servicing should be performed only by a qualified electrician.

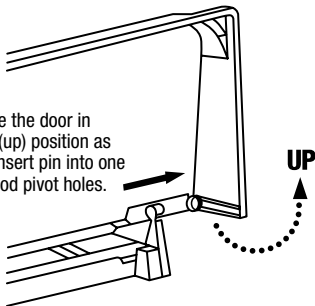
DOOR INSTALLATION

Step 1

Remove the light housing from the base plate.

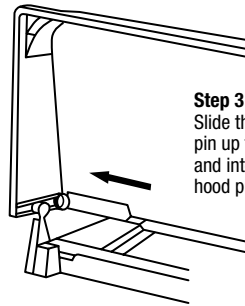
Step 2

Assemble the door in its open (up) position as shown. Insert pin into one of the hood pivot holes.



Step 3

Slide the opposite pin up the ramp and into the second hood pivot hole.



The hood can be modified to accommodate miscellaneous accessories which mount to the rear trim of your aquarium. Carefully cut out modular rear sections as needed with a tin-snips or fine tooth saw.

Aquarium Reflector Models:

20" Incandescent Deluxe Full Hood

20" Fluorescent Deluxe Full Hood

Fits Aquariums with Frame Top Opening 19-1/2" x 9-3/4"

24" Fluorescent Deluxe Full Hood

Fits Aquariums with Frame Top Opening 23-1/4" x 11-1/2"

30" Fluorescent Deluxe Full Hood

Fits Aquariums with Frame Top Opening 29-1/4" x 11-1/2"