



# Owner's Manual

## Betta LED Light



**Please read these instructions in their entirety  
before attempting to use this product.**

# IMPORTANT SAFETY INSTRUCTIONS

**WARNING** – To guard against injury, basic safety precautions should be observed including the following:

## 1. READ AND FOLLOW ALL SAFETY INSTRUCTIONS

2. **DANGER** – To avoid possible electric shock, special care should be taken since water is employed in the use of aquarium equipment. For each of the following situations, do not attempt to repair yourself; return the appliance to an authorized service facility for service or discard the appliance:

A. If the appliance falls into the water, DON'T reach for it! First unplug it and then retrieve it.

If electrical components of the appliance get wet, unplug the appliance completely.

B. Carefully examine the appliance after installation. It should not be plugged in if there is water on the parts not intended to be wet.

C. Do not operate any appliance if it has a damaged cord or plug, or if it is malfunctioning, or if it is dropped or damaged in any manner.

D. To avoid the possibility of the appliance plug or receptacle getting wet, position aquarium stand and tank to one side of the wall-mounted receptacle to prevent water from dripping onto the receptacle or plug. As shown in the figure, a "drip loop" should be arranged by the user for each cord connecting an aquarium appliance to the receptacle. The "drip loop" is the part of the cord below the level of the receptacle, or the connector if an extension cord is used, to prevent water travel along the cord and coming in contact with the receptacle. If the plug or the receptacle does get wet, DON'T unplug the cord. Disconnect the fuse to the circuit breaker that supplies power to the appliance. Then unplug and examine for the presence of water in the receptacle.

3. Close supervision is necessary when any appliance is used by or near children.

4. To avoid injury, do not contact moving parts or hot parts such as heaters, reflectors, lamp bulbs, etc.

5. Always unplug an appliance from the outlet when not in use, before putting on or taking off parts, and before cleaning. Never yank the cord to pull plug from the outlet. Grasp the plug and pull to disconnect.

6. Do not use an appliance for other than intended use. The use of attachments not recommended or sold by the appliance manufacturer may cause an unsafe condition.

7. Do not install or store the appliance where it will be exposed to the weather or to temperatures below freezing.

8. Make sure an appliance mounted on a tank is securely installed before operating it.

9. Read and observe all the important notices on the appliance.

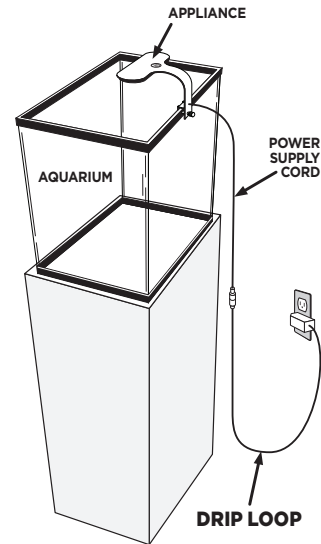
10. If an extension cord is necessary, a cord with a proper rating should be used. A cord rated for less amperes or watts than the appliance rating may overheat. Care should be taken to arrange the cord so that it will not be tripped over or pulled.

11. This appliance is recommended for use over a glass aquarium cover or panel. The appliance is intended **FOR HOUSEHOLD USE ONLY**.

### ONLY FOR POLARIZED ATTACHMENT PLUG APPLIANCES

12. If this appliance has a polarized plug (one blade is wider than the other) as a safety feature, this plug will fit in a polarized outlet only one way. If the plug does not fit fully in the outlet, reverse the plug. If it still does not fit, contact a qualified electrician. Never use with an extension cord unless plug can be fully inserted. Do not attempt to defeat this safety feature.

## 13. SAVE THESE INSTRUCTIONS



**Do not submerge light fixture in water or liquids.**

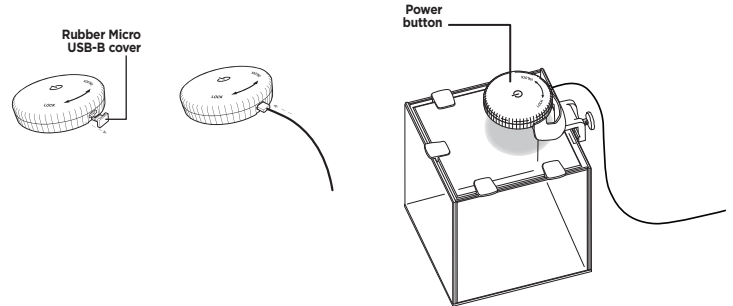
# Operation

## Two Options for Powering this Fixture –

Micro USB-B Cable (not included) or three AAA batteries (not included)

### Primary Option: Micro USB-B Cable Instructions

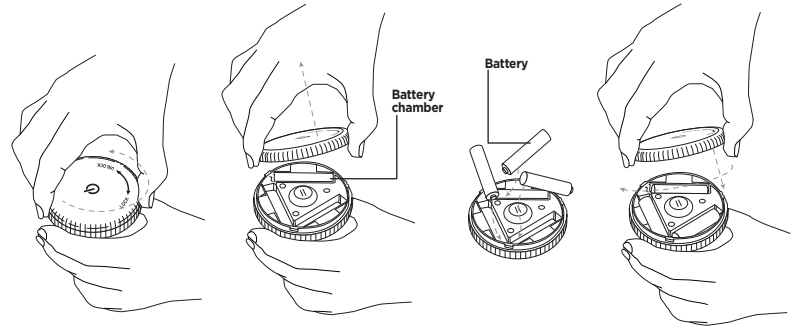
1. Locate the rubber Micro USB cover; gently open.  
**Note:** Rubber cover is attached to the fixture housing and should not be detached.
2. Connect Micro USB-B cable to light.  
**Note:** When using Micro USB-B cable to power the light fixture, use the appropriate 5V adaptor cable and 120V AC wall adapter.
3. If using Micro USB-B cable, the light will remain on until manually turned off.



### Secondary Option: Battery Installation Instructions

The Aqueon® Betta LED Light is equipped with an automatic 1-hour timer. If using the battery option, once a lighting mode is selected, the LEDs will illuminate for 1 hour and then turn off automatically. This feature helps to conserve the battery life.


1. To unlock cap, turn counterclockwise to remove.
2. Place AAA batteries into battery chambers. If not positioned correctly the fixture will not turn on.
3. Replace cap and turn clockwise to lock into place.

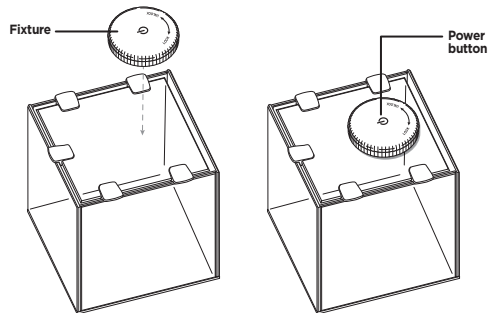


## Three Options for Setup


For use on aquariums with clear tops (glass, plastic, acrylic)

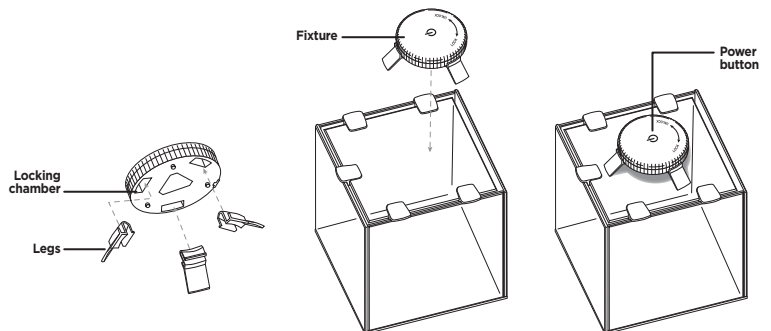
### Light Fixture Only

1. Position fixture on aquarium top.
2. Press power  to turn on fixture to desired illumination mode.




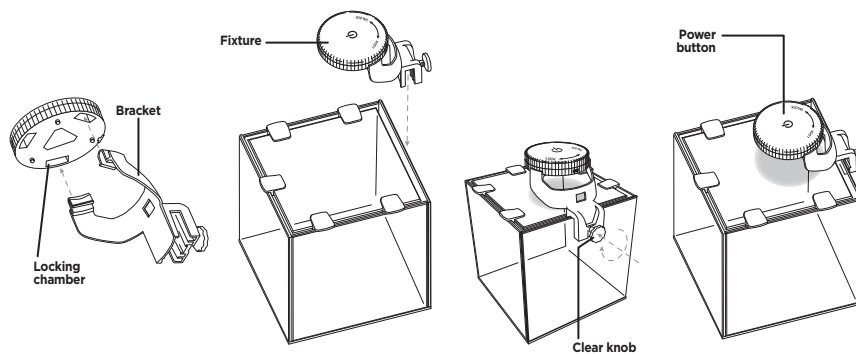
### Light Fixture using Legs

1. Turn fixture over; secure each leg by inserting top of the leg into locking chamber. The legs should spread outward, like a tripod.
2. Position fixture on aquarium top.
3. Press power  to turn on fixture to desired illumination mode.



### Light Fixture using Clamp


1. Turn fixture over; secure clamp by inserting top of bracket into locking chambers.
2. Position clamp on edge of aquarium. To tighten, turn clear knob (clockwise) to secure in place.
3. Press power  to turn on fixture to desired illumination mode.



### Three Modes of Illumination

Blue Only, White Only, All On

After positioning light on aquarium, using your desired setup:

1. Press power  once for BLUE LED ONLY.
2. Tap again for WHITE ONLY.
3. Tap again for ALL ON (blue LED and white).
4. Tap again to TURN OFF.

**Note: Micro USB-B:** When using the USB-B cable, this fixture will have constant power until manually turned off.

**Batteries:** When using batteries, this fixture has a 1 hour timer and will shut off automatically.

**Note:** Micro USB-B cable and batteries are not included.

### CAUTION:

For safety, do not stare directly into a blue LED light as it can cause damage to the eyes.

## Maintenance

---

If using AAA Batteries method of operation, periodically replacing the batteries will be required. How often batteries are replaced will vary by hours of use.

# 90 Day Limited Warranty

---

## WHAT THE WARRANTY COVERS:

Central Aquatics (Company) warrants this Aqueon® product (see Exclusions below) to the original purchaser against defective material and workmanship that occurs during normal in-home use for 90 days. Company will, at Company's option, either repair or replace same without charge (but no cash refunds will be made). This warranty is limited to replacement or repair of product only and does not cover loss of aquarium life, personal injury, property loss, or damage arising from the use of the product.

## EXCLUSIONS:

1. Damage resulting from accident, misuse, abuse, lack of reasonable care, subjecting the product to any but the specified electrical service, other than normal and ordinary use of the product, subjecting the product to abnormal working conditions or any other failure not resulting from defects in materials or workmanship.
2. Damage resulting from modification, tampering with or attempted repair by anyone other than the Company.
3. Transfer of product to someone other than the original consumer purchaser.

## FOR WARRANTY OR TECHNICAL SERVICE:

1. Contact the Company by mail or telephone to obtain a return authorization number:

Central Aquatics  
5401 West Oakwood Park Drive  
Franklin, WI 53132  
Telephone: (888) 255-4527

**NOTE:** Be sure to provide contact information when requesting return authorization number.

2. Deliver, mail or ship the product, together with a copy of the original bill of sale, to:

Central Aquatics  
5401 West Oakwood Park Drive  
Franklin, WI 53132

You must pay any postage, shipping charges, insurance costs and other expenses to return the product along with the original cash register receipt to Central Aquatics. However, if the necessary repairs are covered by the warranty, Company will pay the return shipping charges to any destination within the United States or Canada.

## LIMITATION OF IMPLIED WARRANTIES AND EXCLUSION OF CERTAIN DAMAGES:

THE COMPANY DISCLAIMS LIABILITY FOR INCIDENTAL AND CONSEQUENTIAL DAMAGES FOR BREACH OF ANY EXPRESS OR IMPLIED WARRANTY, INCLUDING ANY IMPLIED WARRANTY OF MERCHANTABILITY, WITH RESPECT TO THIS PRODUCT. THIS WRITING CONSTITUTES THE ENTIRE AGREEMENT OF THE PARTIES WITH RESPECT TO THE SUBJECT MATTER HEREOF; NO WAIVER OR AMENDMENT SHALL BE VALID UNLESS IN WRITING SIGNED BY THE COMPANY. Some states do not allow the exclusion or limitation of consequential damages, so the above limitation or exclusion may not apply to you.