



It's all about the fish.®

LED Strip Light and Deluxe LED Full Hood

Designed for freshwater and saltwater use.

Owner's Manual



Central Aquatics
5401 West Oakwood Park Drive
Franklin, WI 53132

October 2013
R17658

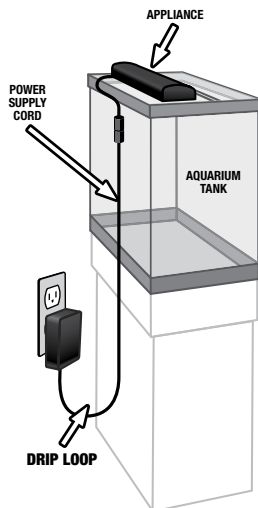
IMPORTANT SAFETY INSTRUCTIONS

WARNING - To guard against injury, basic safety precautions should be observed including the following:

1. READ AND FOLLOW ALL SAFETY INSTRUCTIONS.

2. **DANGER** - To avoid possible electric shock, special care should be taken since water is employed in the use of aquarium equipment. For each of the following situations, do not attempt to repair yourself; return the appliance to an authorized service facility for service or discard the appliance.
 - A. If the appliance falls into the water, **DO NOT** reach for it! First unplug it and then retrieve it. If electrical components of the appliance get wet, unplug the appliance immediately.
 - B. Carefully examine the appliance after installation. It should not be plugged in if there is water on the parts not intended to be wet.
 - C. Do not operate any appliance if it has a damaged cord or plug, if it is malfunctioning or if it is dropped or damaged in any manner.
 - D. To avoid the possibility of the appliance plug getting wet, position aquarium stand and tank to one side of a wall mounted receptacle to prevent water from dripping onto the receptacle or plug. A "drip loop", shown in the figure below, should be arranged by the user for each cord connecting an aquarium appliance to the receptacle. The "drip loop" is the part of the cord below the level of the receptacle, or the connector if an extension cord is used, to prevent water traveling along the cord and coming in contact with the receptacle. If the plug or receptacle does get wet, **DO NOT** unplug the cord. Disconnect the fuse to the circuit breaker that supplies power to the appliance. Then unplug and examine for the presence of water in the receptacle.
3. Close supervision is necessary when any appliance is used by or near children.
4. To avoid injury, do not contact moving parts or hot parts such as heaters, reflectors, lamp bulbs, and the like.
5. Always unplug the appliance from the outlet when not in use, before putting on or taking off parts, and before cleaning. Never yank the cord to pull plug from outlet. Grasp the plug and pull to disconnect.
6. Do not use an appliance for other than intended use. The use of attachments not recommended or sold by the appliance manufacturer may cause an unsafe condition.
7. Do not install or store the appliance where it will be exposed to the weather or to temperatures below freezing.
8. Make sure an appliance mounted on a tank is securely installed before operating it.
9. Read and observe all the important notices on the appliance.
10. If an extension cord is necessary, a cord with a proper rating should be used. A cord rated for less amperes or watts than the appliance rating may overheat. Care should be taken to arrange the cord so that it will not be tripped over or pulled.
11. This appliance was designed for use over a glass aquarium cover or panel. **DO NOT USE OVER "OPEN" WATER.** Moisture from the aquarium will collect on exposed light parts and may cause a shock hazard and/or damage the light.

The appliance is intended **FOR HOUSEHOLD USE ONLY.**
12. Do not use or mount this appliance in such a way that the top vents are restricted or blocked. These vents are necessary to avoid ballast over heating and ensure safe operating temperatures.



13. SAVE THESE INSTRUCTIONS.



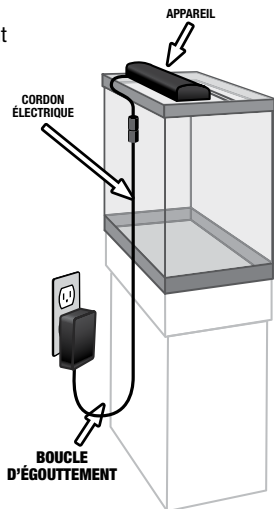
Transformer

INSTRUCTIONS DE SÉCURITÉ IMPORTANTES

AVERTISSEMENT - Pour écarter les risques de blessures, veiller à respecter des précautions élémentaires, notamment :

- LIRE ET RESPECTER TOUTES LES INSTRUCTIONS DE SÉCURITÉ.**
- DANGER** - Pour écarter les risques de décharge électrique, faire preuve de précautions particulières en raison de la présence d'eau dans l'aquarium. Dans chacune des situations ci-dessous, ne pas tenter de réparer soi-même ; renvoyer l'appareil à un centre de réparation agréé ou le mettre au rebut.
 - Si l'appareil tombe dans l'eau, **NE PAS** y mettre la main ! Débrancher d'abord l'appareil puis le récupérer. Si des composants électriques de l'appareil sont mouillés, le débrancher immédiatement.
 - Examiner l'appareil avec soin après son installation. Ne pas le brancher s'il y a de l'eau sur des pièces non destinées à être mouillées.
 - Ne pas utiliser un appareil s'il a un cordon ou une fiche endommagés, s'il fonctionne mal, s'il est tombé ou s'il a été endommagé d'une quelconque façon.
 - Pour écarter le risque de mouiller la fiche de l'appareil, placer le socle et la cuve de l'aquarium sur le côté par rapport à la prise murale, afin d'éviter que l'eau ne goutte dans la prise ou la fiche. Prévoir une « boucle d'égouttement », illustrée ci-dessous, sur chaque cordon qui raccorde un appareil de l'aquarium à la prise de courant. La « boucle d'égouttement » est la portion de cordon en dessous du niveau de la prise, ou du connecteur si un cordon de rallonge est utilisé, pour empêcher l'eau de s'écouler le long du fil et de venir au contact de la prise. Si la fiche ou la prise est mouillée, **NE PAS** débrancher le cordon. Couper l'électricité au niveau du disjoncteur qui alimente l'appareil. Débrancher ensuite le cordon et voir s'il y a de l'eau dans la prise de courant.
- Une surveillance attentive est nécessaire lorsqu'un quelconque appareil est utilisé par ou à proximité des enfants.
- Pour éviter les blessures, ne pas toucher de pièces en mouvement ni de pièces chaudes telles que radiateurs, réflecteurs, ampoules et autres.
- Toujours débrancher l'appareil de la prise lorsqu'il n'est pas utilisé, avant de poser ou d'enlever des pièces et avant de le nettoyer. Ne jamais tirer sur le cordon pour sortir la fiche de la prise. Saisir la fiche et la tirer pour débrancher.
- Ne pas utiliser un appareil autrement que pour l'emploi prévu. L'emploi d'accessoires non recommandés ni vendus par le fabricant de l'appareil peut produire une situation dangereuse.
- Ne pas installer ni entreposer l'appareil dans un endroit exposé aux intempéries ou à des températures inférieures au gel.
- S'assurer qu'un appareil monté sur une cuve est solidement installé avant de le mettre en marche.
- Lire et respecter toutes les notices importantes figurant sur l'appareil.
- Si un cordon de rallonge est nécessaire, utiliser un cordon de capacité suffisante. Un cordon prévu pour des intensités (A) ou des puissances (W) inférieures à celles de l'appareil peut surchauffer. Veiller à disposer le cordon de manière à éviter tout risque de trébuchement ou d'arrachement.
- Cet appareil est conçu pour une utilisation sur un couvercle ou panneau d'aquarium en verre. **NE PAS UTILISER DIRECTEMENT AU-DESSUS DE L'EAU.** L'humidité de l'aquarium se déposera sur les parties exposées de la lampe, pouvant causer un danger de décharge électrique ou des dommages de l'appareil.

Ce appareil est destiné à une **UTILISATION DOMESTIQUE SEULEMENT.**
- Ne pas utiliser ni monter cet appareil de manière à restreindre ou à boucher les événements. Ces événements sont nécessaires pour éviter la surchauffe du ballast et assurer des températures de fonctionnement sans danger.



13. CONSERVER CES INSTRUCTIONS.

IMPORTANT CLEANING & SERVICING PRECAUTIONS

CLEANING: It is important to keep this appliance clean. **Unplug** and remove the unit from the aquarium. Wipe exposed surfaces carefully with a damp cloth to remove any dust or mineral deposits which may collect over time. Make sure all surfaces are dry before reinstalling.

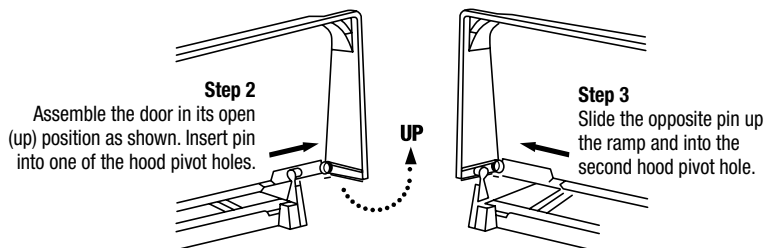
SERVICING: In order to assure proper electrical connections and polarity, replacement parts and servicing should be performed only by a qualified electrician.

INSTALLATION INSTRUCTIONS – Deluxe Full Hoods

DOOR INSTALLATION

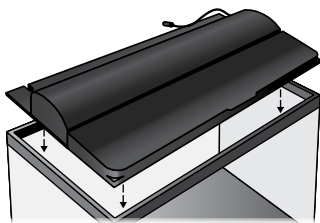
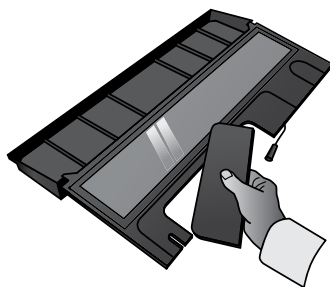
Step 1

Remove the light housing from the base plate.



BREAKOUT

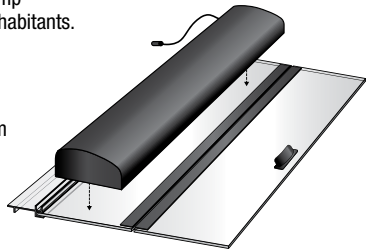
Full hoods are equipped with break out panels to accommodate different filter sizes. Using gentle force, remove necessary breakout panels to fit your filter.



INSTALLATION INSTRUCTIONS – Strip Lights

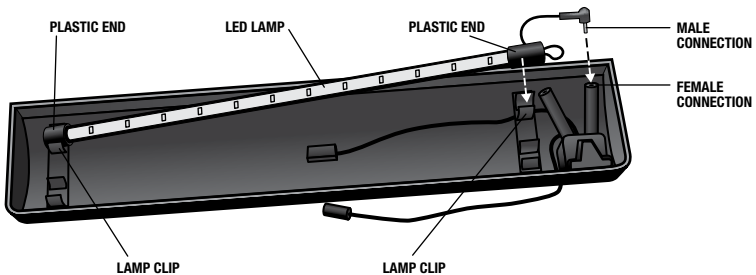
- This product is intended for use over glass-covered aquariums only.
- Aqueon® glass covers fit on the inside lip of the aquarium to prevent seepage out of the aquarium.

1. Position fixture over glass cover of aquarium so that lamp provides maximum exposure of light to all aquarium inhabitants.
2. Connect the transformer to the connector on the back of the light fixture.
3. Plug transformer into an acceptable outlet. Be sure to incorporate a “drip loop” to prevent water droplets from running down the cord and into the outlet should any water get onto the cord.



INSTALLATION INSTRUCTIONS – LED Lamp

1. Turn the power switch to the off (0) position and unplug the transformer from outlet prior to installing or uninstalling an LED lamp. Flip the fixture over onto a clean/non abrasive surface so the underside is accessible.
2. Installing/Uninstalling the LED Lamp:
 - a. To install an LED lamp, connect the male connection on the lamp to the female connection inside the fixture (on the power switch side). Press the male and female connectors together to make a complete connection inside the protective rubber sleeve.
 - b. Snap both plastic ends of the LED lamp into the lamp clips inside the fixture housing making sure it is completely installed and held securely by the clips.
 - c. To uninstall a lamp, unclip the plastic ends of the lamp from the lamp clips inside the fixture then disconnect the male/female connection for that lamp inside the fixture. The LED lamp can now be removed from the fixture. To re-install follow step 2a and 2b.



MAINTENANCE

1. Always turn off light fixture and unplug from outlet prior to performing any maintenance.
2. Water spray and water scale can create an electrical and fire safety hazard if allowed to collect on fixture. To prevent hazard, use over covered aquarium only and clean fixture regularly. Wipe exterior of fixture down with a clean, freshwater dampened towel. Then dry thoroughly with a second dry towel. Make sure all surfaces are dry before servicing.

AQUEON® LED AQUARIUM LAMP

Ask your retailer for
Aqueon® LED Aquarium Lamps

DAY WHITE: A bright white lamp for fresh or saltwater aquariums.

COLORMAX: A combination of white and red LEDs that create a warm glow to enhance the color and appearance of tropical fish.

MAX BLUE: A rich blue lamp that provides shimmering natural deep sea illumination to aquarium or enhances the fluorescence effect of fluorescent fish and corals.

BEAUTY MAX: A combination of red, green and blue light to enhance the color of fish, plants and aquarium decor.

Fixture Size	Aqueon® LED Aquarium Lamp
20"	Size 20
24"	Size 24
30"	Size 30
36"	Size 36

AQUARIUM LED LIGHTING MODELS:

20" LED Aquarium Strip Light (for replacement only); **20" LED Full Hood**

24" LED Aquarium Strip Light (for replacement only); **24" LED Full Hood**

30" LED Aquarium Strip Light (for replacement only); **30" LED Full Hood**

36" LED Aquarium Strip Light (for replacement only); **36" LED Full Hood**

LIMITED WARRANTY *

Aqueon® warrants that this product shall be free from defective electrical components due to defects in materials or workmanship for a period of twelve months from the date of purchase. If a defect is shown, Aqueon® will, at the sole discretion of Aqueon®, either repair or replace the product without charge. No cash refunds will be made. This warranty is provided solely to the original consumer purchaser of the product and may not be transferred or assigned. You must retain original proof of purchase to validate this warranty.

This warranty does not apply to damage resulting from accident, misuse, abuse, lack of reasonable care, failure to follow safety and installation instructions, use of the product with non-standard electrical service, or any other defect not resulting from defects in the electrical components of the product or defects in materials or workmanship. This warranty will not be effective unless and until the Aqueon® product is shown to have been used in accordance with the safety and installation instructions accompanying the product, including the requirement that the product be used over a covered aquarium.

THIS CONSTITUTES THE ENTIRE AQUEON® WARRANTY AND AQUEON® MAKES NO OTHER WARRANTIES, WHETHER EXPRESS OR IMPLIED, WITH RESPECT TO THE PRODUCT. AQUEON® SPECIFICALLY DISCLAIMS ANY AND ALL IMPLIED WARRANTIES, INCLUDING, WITHOUT LIMITATION, WARRANTIES OF MERCHANTABILITY AND FITNESS FOR A PARTICULAR PURPOSE. IF AQUEON® CANNOT LAWFULLY DISCLAIM IMPLIED WARRANTIES UNDER THIS LIMITED WARRANTY, ALL SUCH WARRANTIES, INCLUDING WARRANTIES OF MERCHANTABILITY AND FITNESS FOR A PARTICULAR PURPOSE ARE LIMITED IN DURATION TO THE DURATION OF THIS WARRANTY.

AQUEON® IS NOT RESPONSIBLE FOR DIRECT, SPECIAL, INCIDENTAL OR CONSEQUENTIAL DAMAGES RESULTING FROM ANY BREACH OF WARRANTY OR CONDITION, OR UNDER ANY OTHER LEGAL THEORY. AQUEON® EXPRESSLY DISCLAIMS ALL ALLEGED DAMAGES FOR LOSS OF AQUATIC LIFE, PERSONAL INJURY, AND/OR PROPERTY DAMAGE. Some states and provinces do not allow the exclusion or limitation of incidental or consequential damages or exclusions or limitations on the duration of implied warranties or conditions, so the above limitations or exclusions may not apply to you. This warranty gives you specific legal rights, and you may also have other rights that vary by state or province.

Aqueon® shall not have any obligations under this warranty unless the owner notifies Aqueon® in writing of any alleged defect(s) within 30 days of discovery of the defect(s). Any notice to Aqueon® must be delivered by United States or electronic mail to one of the following addresses:

U.S. Mail: Central Aquatics - Aqueon, 5401 West Oakwood Park Drive, Franklin, Wisconsin 53132

Electronic Mail: info@Central-Aquatics.com

Aqueon® shall be allowed a reasonable period of time to investigate any warranty claim and to perform any testing Aqueon® deems necessary to determine the cause of the defect. This warranty shall be interpreted under the laws of the state of Wisconsin.

For additional information regarding this limited warranty, please contact us at the addresses above, or call us at 888-255-4527.

**Lamps are not included in this warranty.*