

Hinged Glass Top

Handle Application Instruction

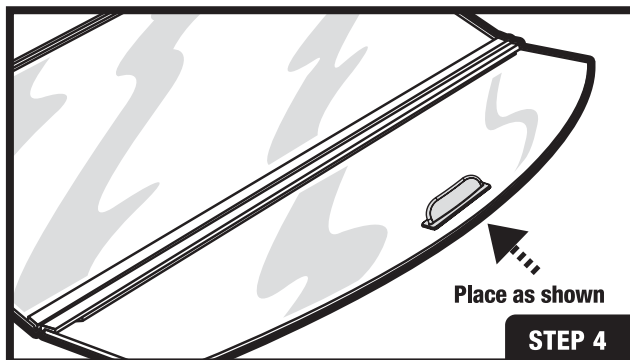
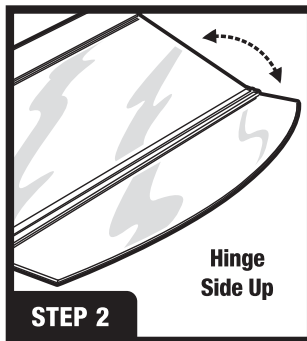
ATTENTION

*Read all steps before
proceeding with handle
application!*

Step 1: Place clean glass top on flat surface.
(Glass surface must be completely clean and
dry before handle application.)

Step 2: Desired handle location is centered, near the front
edge of the hinged glass door. (Make sure hinge
side of glass is up.)

Step 3: Peel away clear tape protection from handle.



Step 4: Carefully place handle in the desired location and
proper position.

IMPORTANT: Once the handle has been affixed to the hinged glass
door, do not attempt to remove or reposition. Always keep the handle
area clean and dry.

AQUEON

A product of **Central Aquatics**
(Division of Central Garden & Pet Company)
Franklin, WI 53132
888.255.4527 aqueonproducts.com
Aqueon is a registered trademark of
Central Garden & Pet Company
©2015 Central Garden & Pet Company